

111 W Micheltorena St
SANTA BARBARA, CA



For Lease | Downtown Office Space | 1,722 - 5,430 SF

Experience. Integrity. Trust.
Since 1993

Caitlin Hensel
805.898.4374
caitlin@hayescommercial.com
lic. 01893341

Kristopher Roth
805.898.4361
kris@hayescommercial.com
lic. 01482732





PROPERTY SUMMARY

Abundant windows and patios allow plenty of natural light into these bright and airy spaces overlooking a large courtyard with peaceful water feature.

Suite 300 A provides a good mix of open work space and private offices, with a large conference room and private patio access. **Suite 200** offers a large conference room, full kitchen, private remodeled restroom, dual access and private patio. **Suite 220** features an efficient layout of private offices. Across the street from local favorite lunch spot Three Pickles Deli and near the Public Market and vibrant theater district.

Project Name: The Alanmar Building

<u>Suite</u>	<u>Size</u>	<u>Floor</u>	<u>Parking</u>
200	3,708 SF	2nd	11 spaces
220	1,722 SF	2nd	5 spaces
300-A	3,376 SF	3rd	8 spaces

Rate: \$2.35 NNN (.95)

Utilities: \$0.40 psf

Term: 3-5 years

Available: Suite 200, 1/1/25; Suite 220, now; Suite 300-A, 12/1/24

Zoning: C-G

HVAC: Throughout

Restrooms: Yes, common

Elevator: Yes

To Show: Call listing agent

Experience. Integrity. Trust.
Since 1993

Caitlin Hensel
805.898.4374
caitlin@hayescommercial.com
lic. 01893341

Kristopher Roth
805.898.4361
kris@hayescommercial.com
lic. 01482732

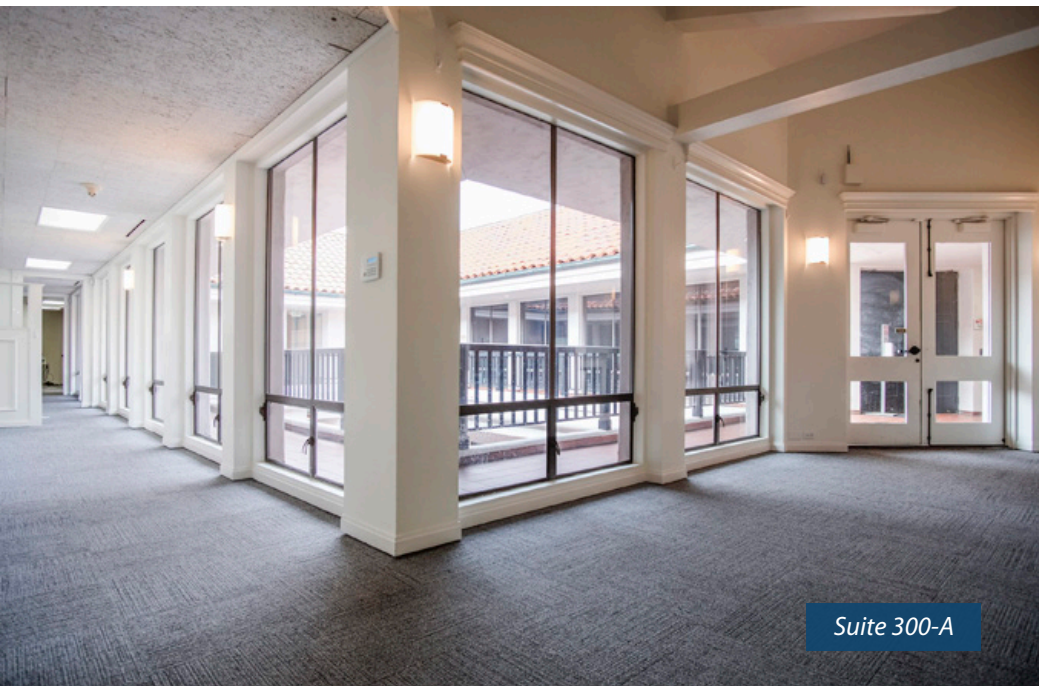




Suite 300-A



Suite 300-A



Suite 300-A



Common courtyard

Experience. Integrity. Trust.
Since 1993

Caitlin Hensel
805.898.4374
caitlin@hayescommercial.com
lic. 01893341

Kristopher Roth
805.898.4361
kris@hayescommercial.com
lic. 01482732

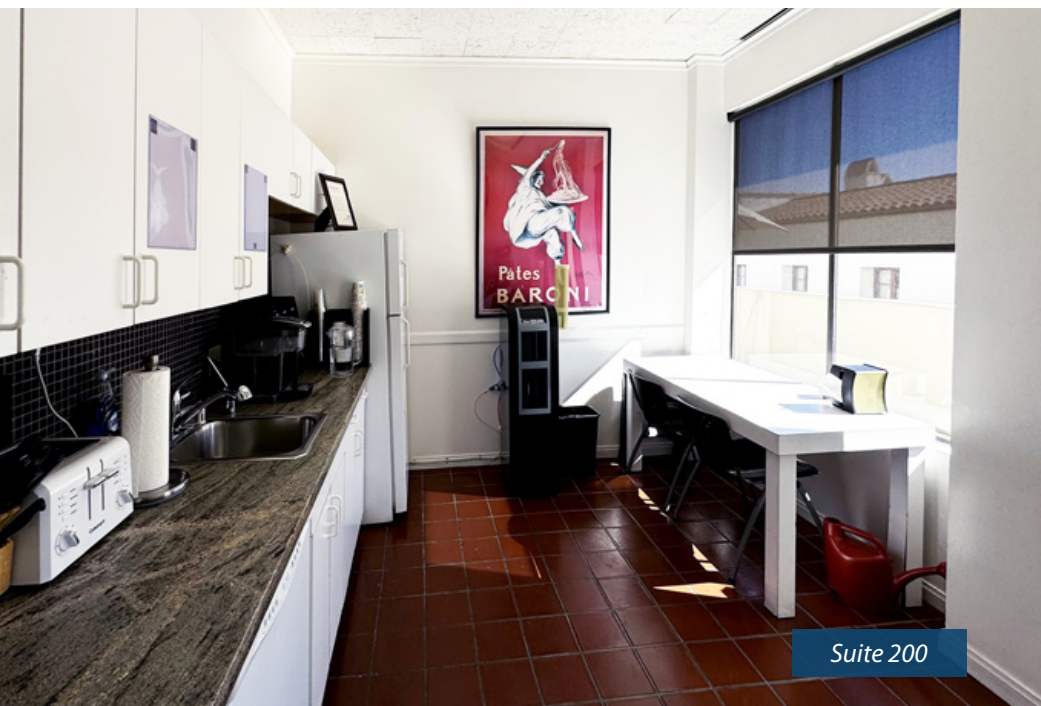




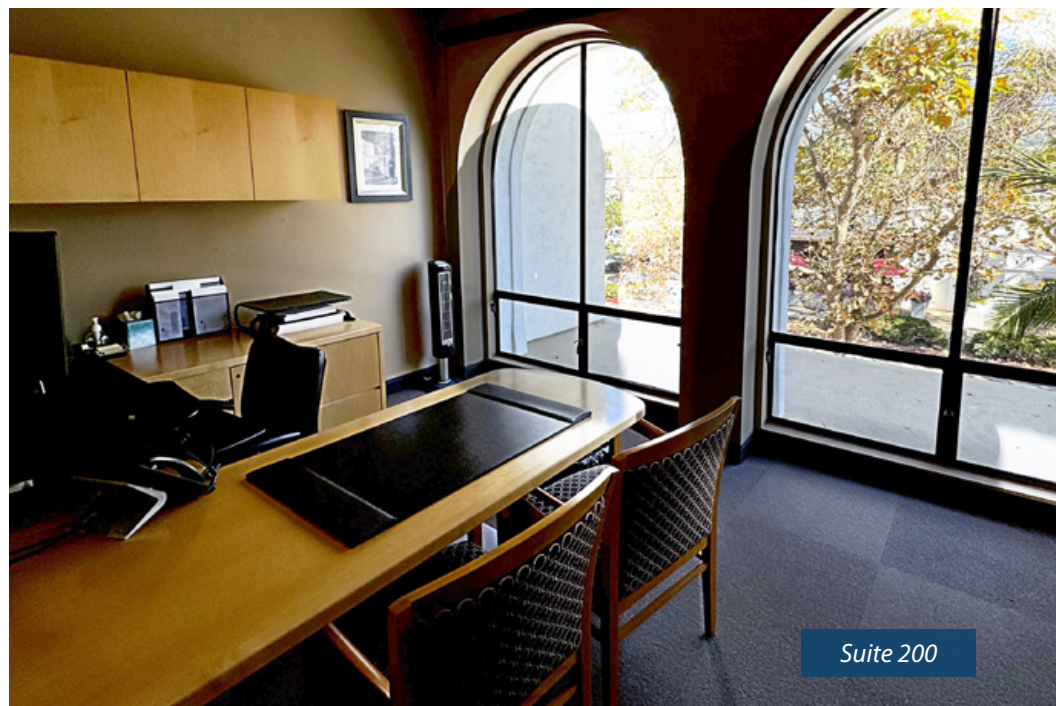
Suite 200



Suite 200



Suite 200



Suite 200

Experience. Integrity. Trust.
Since 1993

Caitlin Hensel
805.898.4374
caitlin@hayescommercial.com
lic. 01893341

Kristopher Roth
805.898.4361
kris@hayescommercial.com
lic. 01482732

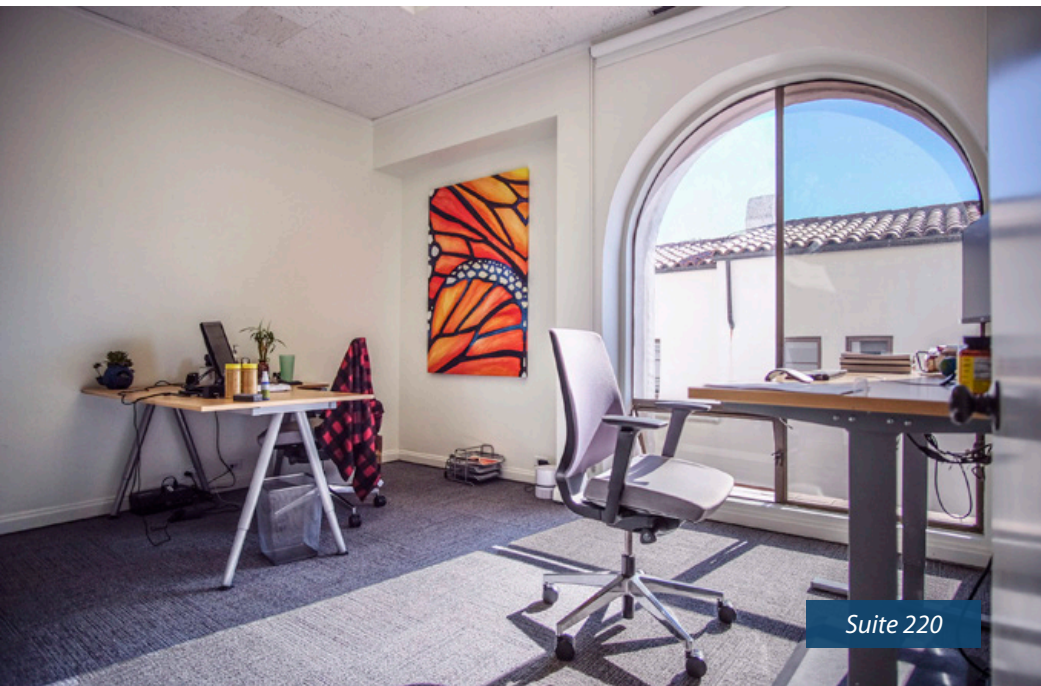




Suite 220



Suite 220



Suite 220



Suite 220

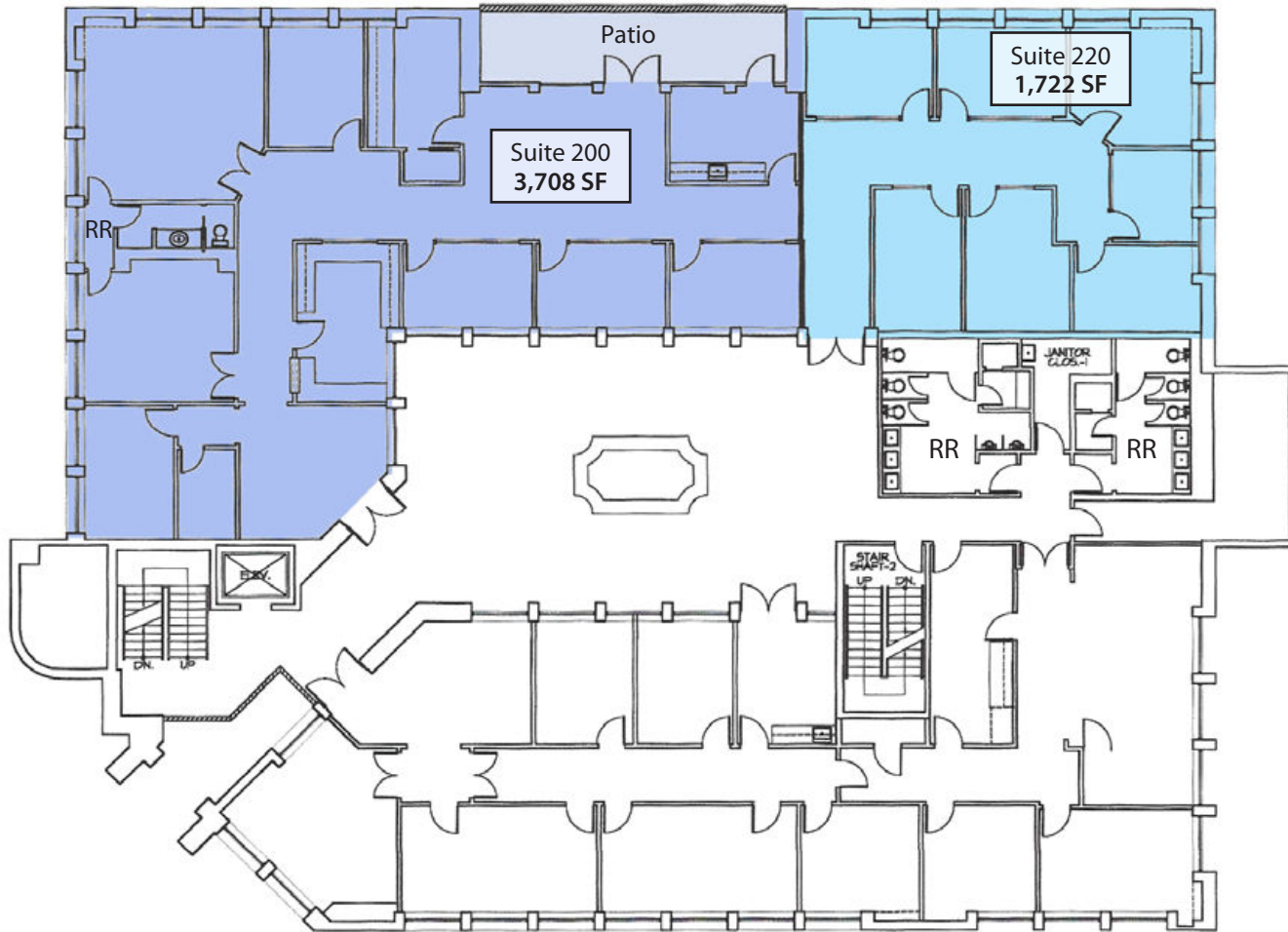
Experience. Integrity. Trust.
Since 1993

Caitlin Hensel
805.898.4374
caitlin@hayescommercial.com
lic. 01893341

Kristopher Roth
805.898.4361
kris@hayescommercial.com
lic. 01482732



SECOND FLOOR PLAN



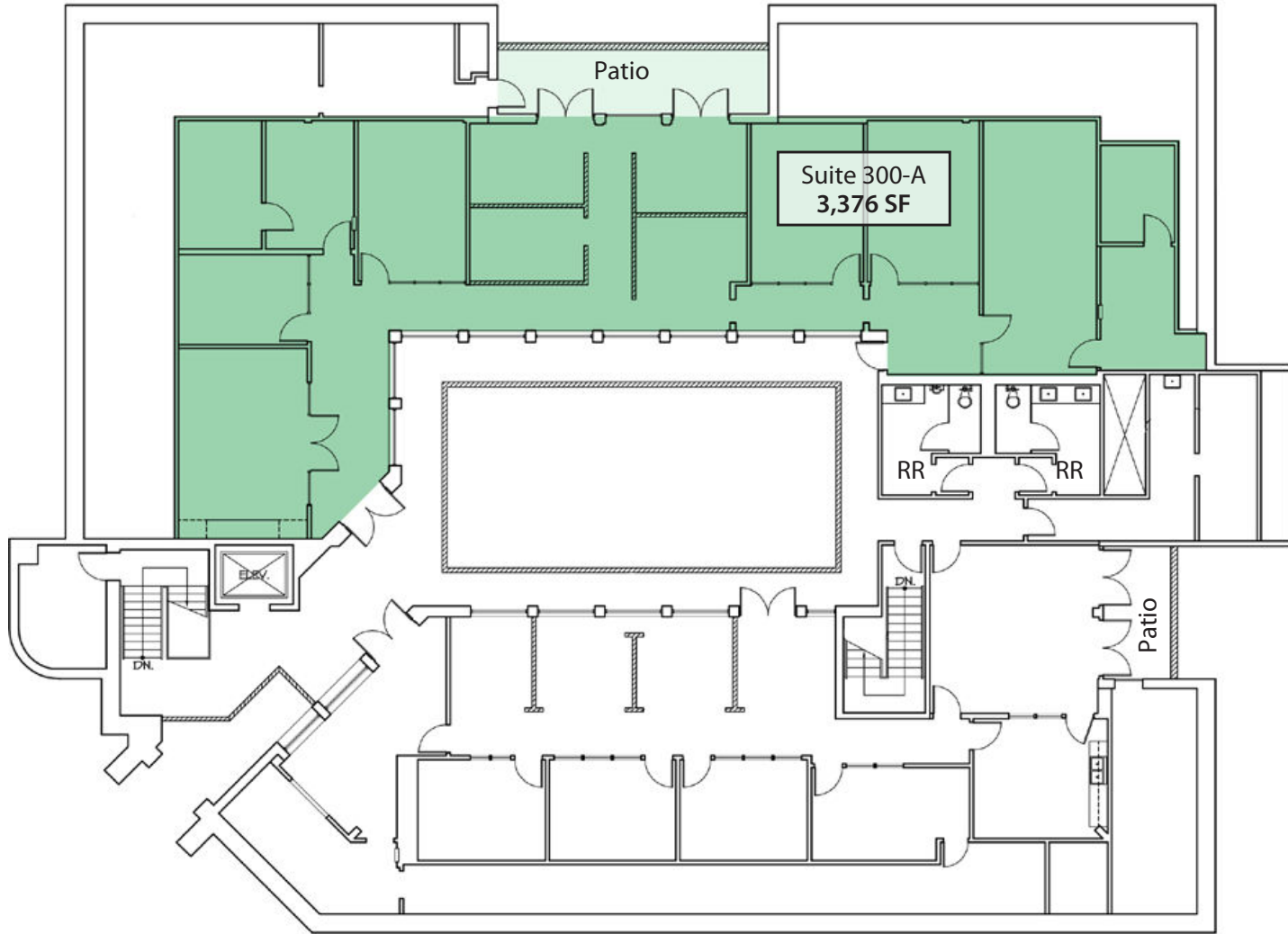
Experience. Integrity. Trust.
Since 1993

Caitlin Hensel
805.898.4374
caitlin@hayescommercial.com
lic. 01893341

Kristopher Roth
805.898.4361
kris@hayescommercial.com
lic. 01482732



THIRD FLOOR PLAN



Experience. Integrity. Trust.
Since 1993

Caitlin Hensel
805.898.4374
caitlin@hayescommercial.com
lic. 01893341

Kristopher Roth
805.898.4361
kris@hayescommercial.com
lic. 01482732





County
Courthouse

Granada
Theatre

Arlington
Theatre

State St

Three
Pickles Deli

Micheltorena St

SITE

Chapala St

Experience. Integrity. Trust.
Since 1993

Caitlin Hensel
805.898.4374
caitlin@hayescommercial.com
lic. 01893341

Kristopher Roth
805.898.4361
kris@hayescommercial.com
lic. 01482732

