

6868 Cortona Dr
GOLETA, CA

Exclusive outdoor patio



For Lease | Office/R&D Suite in Elite Tech Campus | **12,669 SF**

Experience. Integrity. Trust.
Since 1993

Caitlin Hensel
805.898.4374
caitlin@hayescommercial.com
lic. 01893341

Kristopher Roth
805.898.4361
kris@hayescommercial.com
lic. 01482732



PROPERTY SUMMARY

Well furnished first-floor offices amongst powerhouse tenants including Google and Openlight. Suite offers large offices, kitchenette, private employee lounge, exclusive outdoor patio, and proximity to a host of amenities including Camino Real Marketplace, M Special and Hilton Garden Inn.

Size	12,669 SF
Rate	\$1.75 NNN (.50)
Term	5-10 years
Availability	Now
Zoning	B-P
Parking	Ample parking on-site
Kitchenette	Yes
HVAC	Throughout
Restrooms	Private and common
To Show	Call listing agent



Experience. Integrity. Trust.
Since 1993

Caitlin Hensel
805.898.4374
caitlin@hayescommercial.com
lic. 01893341

Kristopher Roth
805.898.4361
kris@hayescommercial.com
lic. 01482732





Experience. Integrity. Trust.
Since 1993

Caitlin Hensel
805.898.4374
caitlin@hayescommercial.com
lic. 01893341

Kristopher Roth
805.898.4361
kris@hayescommercial.com
lic. 01482732



FLOOR PLAN



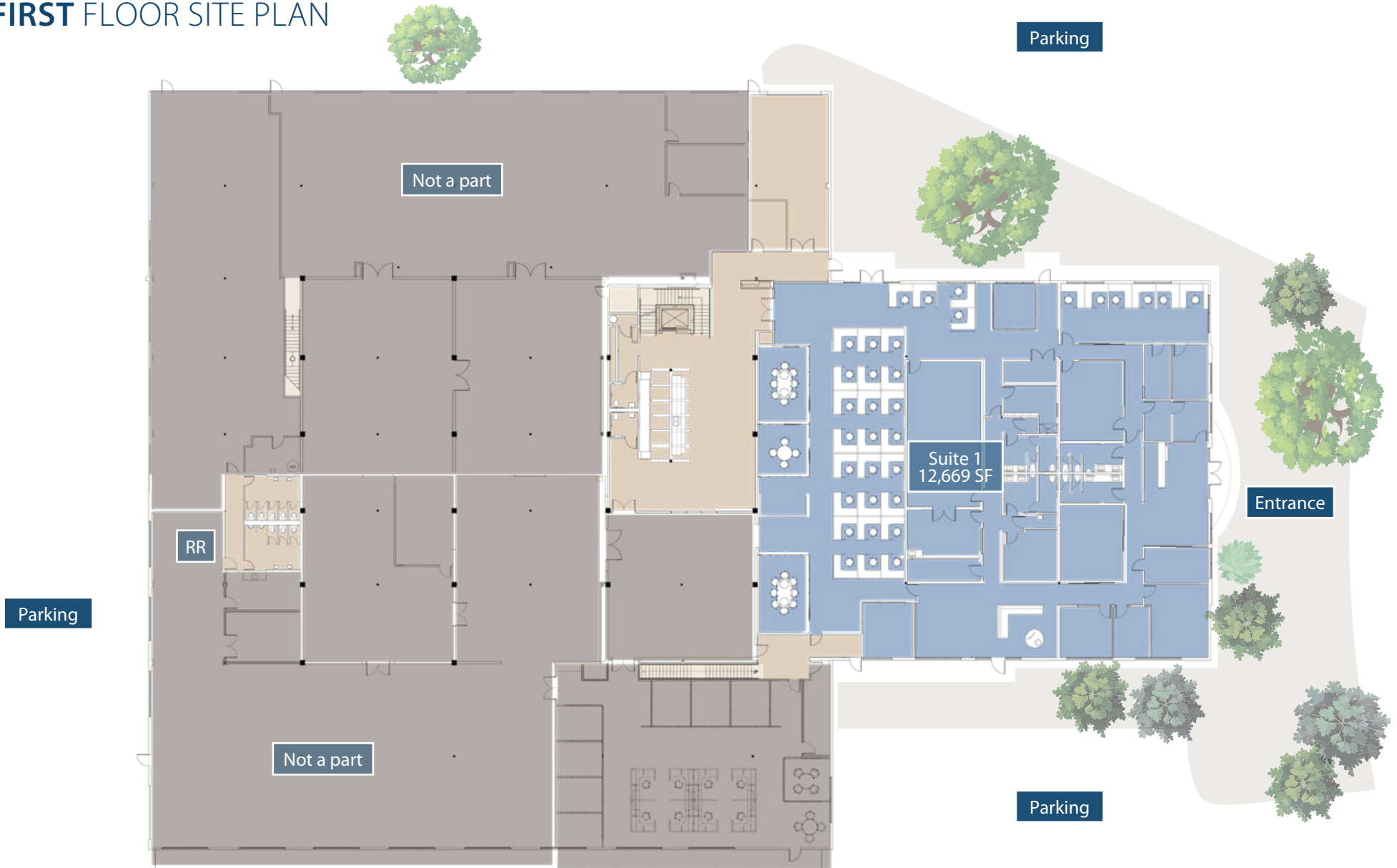
Experience. Integrity. Trust.
Since 1993

Caitlin Hensel
805.898.4374
caitlin@hayescommercial.com
lic. 01893341

Kristopher Roth
805.898.4361
kris@hayescommercial.com
lic. 01482732



FIRST FLOOR SITE PLAN



Experience. Integrity. Trust.
Since 1993

Caitlin Hensel
805.898.4374
caitlin@hayescommercial.com
lic. 01893341

Kristopher Roth
805.898.4361
kris@hayescommercial.com
lic. 01482732



SANTA BARBARA

GOLETA

GOLETA BEACH

UCSB

ISLA VISTA

AREA OVERVIEW

SITE

Experience. Integrity. Trust.
Since 1993

Caitlin Hensel
805.898.4374
caitlin@hayescommercial.com
lic. 01893341

Kristopher Roth
805.898.4361
kris@hayescommercial.com
lic. 01482732

