

5383 Hollister Ave
GOLETA, CA

On-site **gym** and **locker rooms**

For Lease | Class A Office Suites | **5,408 - 11,695 SF**

Experience. Integrity. Trust.
Since 1993

Francois DeJohn
805.898.4365
fran@hayescommercial.com
lic. 01144570





PROPERTY SUMMARY

Class A office space at the Santa Barbara Corporate Center. **Suite 140** features a spacious layout with private offices and open bullpen area. **Suite 240** offers large private offices, spacious conference room and kitchenette/break room. **Suite 280** offers private offices, conference room, kitchenette, server room, and space for workstations. Conveniently located off the Patterson Avenue exit and adjacent to Goleta Valley Cottage Hospital.

Space:	<u>Suite 140</u>	<u>Suite 240</u>	<u>Suite 280</u>
Size:	6,450 - 11,695 SF	7,312 SF	5,408 SF
Floor:	First	Second	Second
Available	Now	6/1/24	Now

Project:	Santa Barbara Corporate Center
Building Size:	82,000 SF
Lease Rate:	\$1.75 NNN (.70)
Utilities:	Estimated at \$0.32 psf
Available:	Now
Term:	3 - 10 years
Parking:	3.3/1,000 SF
HVAC:	Yes
Restrooms:	Common
Sprinklers:	Yes
Common Areas:	Onsite gym with shower/locker room, volleyball and basketball courts
To Show:	Call listing agents

Experience. Integrity. Trust.
Since 1993

Francois DeJohn
805.898.4365
fran@hayescommercial.com
lic. 01144570



SUITE 140



Experience. Integrity. Trust.
Since 1993

Francois DeJohn
805.898.4365
fran@hayescommercial.com
lic. 01144570





SUITE 240

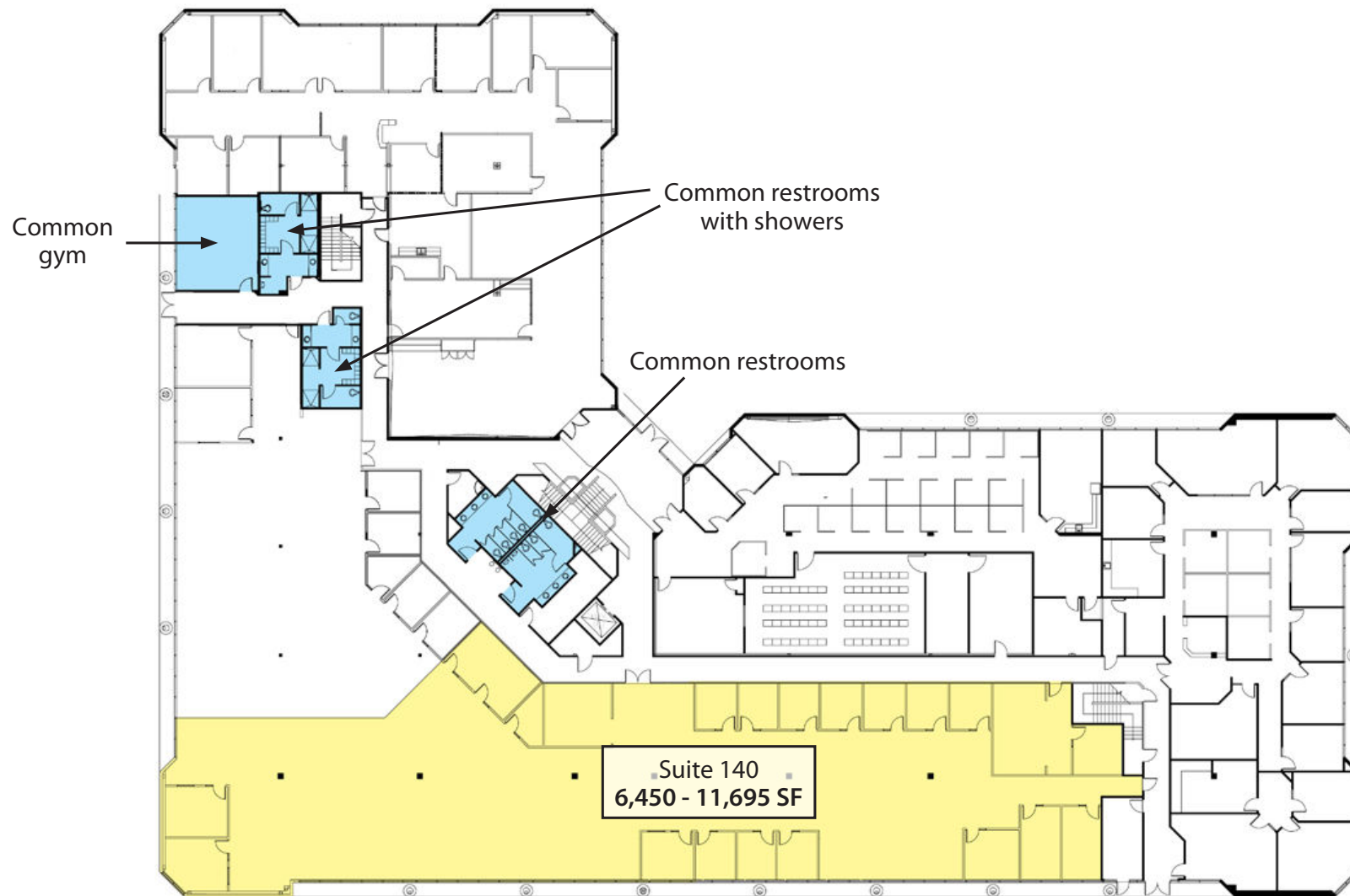


Experience. Integrity. Trust.
Since 1993

Francois DeJohn
805.898.4365
fran@hayescommercial.com
lic. 01144570

 **Hayes**
COMMERCIAL GROUP

FIRST FLOOR PLAN

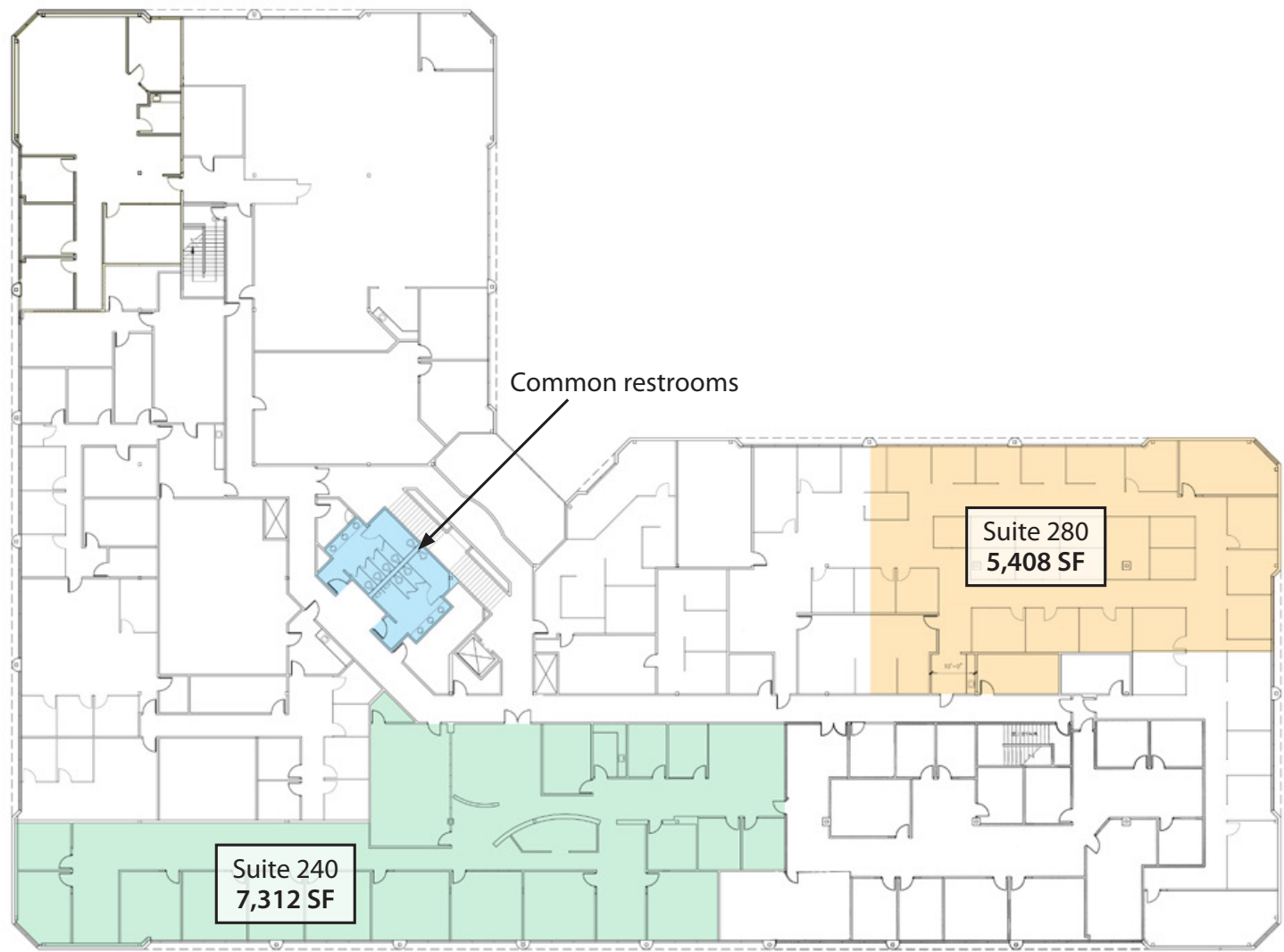


Experience. Integrity. Trust.
Since 1993

Francois DeJohn
805.898.4365
fran@hayescommercial.com
lic. 01144570



SECOND FLOOR PLAN



Experience. Integrity. Trust.
Since 1993

Francois DeJohn
805.898.4365
fran@hayescommercial.com
lic. 01144570



AREA OVERVIEW



Experience. Integrity. Trust.
Since 1993

Francois DeJohn
805.898.4365
fran@hayescommercial.com
lic. 01144570

